



Building automation system

Controls

Building automation

Building automation system

Building automation today is a lot more than lighting control, it is a way to save energy and to improve wellbeing and people efficiency. Like a person, an automated building/house can change over time, following evolving needs, easily adapting itself to new solutions. The automation in buildings means energy saving, reduced CO₂ emissions and improvement of the environment in compliance with the national and international guideline.

The new building automation system by Carlo Gavazzi offers this new way of living to its customers: let's discover all the advantages and applications!



A dynamic and evolving system

Carlo Gavazzi delivers a new way of designing a house or a building, thanks to its flexibility and modularity.

It is based on a patented digital bus, the two-wire Dupline® bus, very powerful in transmitting all the information needed in building automation. Thanks to the bus concept, the system can be expanded at any time without important structural changes in the installation and with excellent management of the costs. Furthermore, the functions can be changed and/or updated very easily by means of a software at any time and from anywhere, also remotely. Thanks to this, the system is always alive, dynamic, and easily adapted to the evolving requirements of the home owner and to the fast-progressing world of high technology. Carlo Gavazzi's system delivers complete solutions for home and building automation, including lighting scenarios

to select the best ambience, shutter control to regulate perfect light and shade, temperature management to combine optimum comfort with optimum efficiency, intrusion, flooding and smoke monitoring to protect from any burglary or damage to the house, a scheduler to program all events and basic functions. All this creates very special automation. The system also includes energy monitoring, logging power, water and gas consumption and whatever information is present on the bus (temperatures, humidity, light level, ...). All this data is available on graphs, just by using a smart device or a PC, thanks to the embedded webserver. Moreover, the system is an open platform designed for easy and fast integration with products from other companies, since we use protocols based on TCP/IP, for which we deliver the complete documentation.

Fast commissioning without any addressing

One of the most innovative features is that no addressing of modules is needed: the installer just has to mount all the modules, launch a network scan and the system will find and automatically recognise the connected devices without the need to go around the whole installation making association or addressing. This means time and cost savings and an error free configuration process.



Diagnostic function for easier troubleshooting

If any trouble should occur, the system provides powerful diagnostic functions in order to make the fault finding much easier: the bus is always monitored, giving information about shortcircuits, bus voltage and bus load, noise level and quality of the bus signals. The presence of the programmed devices is always monitored in order to give an immediate message if one is faulty. All this information is logged in a file so that the installer can check at any time what is happening.



State of the art software to guide users

The configuration of the system is easily carried out with the free Sx tool that is downloadable from the Carlo Gavazzi website. The software has been developed using a state of the art concept in order to have a user friendly interface that guides the user in a fast and error free system configuration. At the same time, thanks to many basic functions, the most skilled user can also create customised applications. Furthermore, the Sx tool has many debug features to make testing easier.

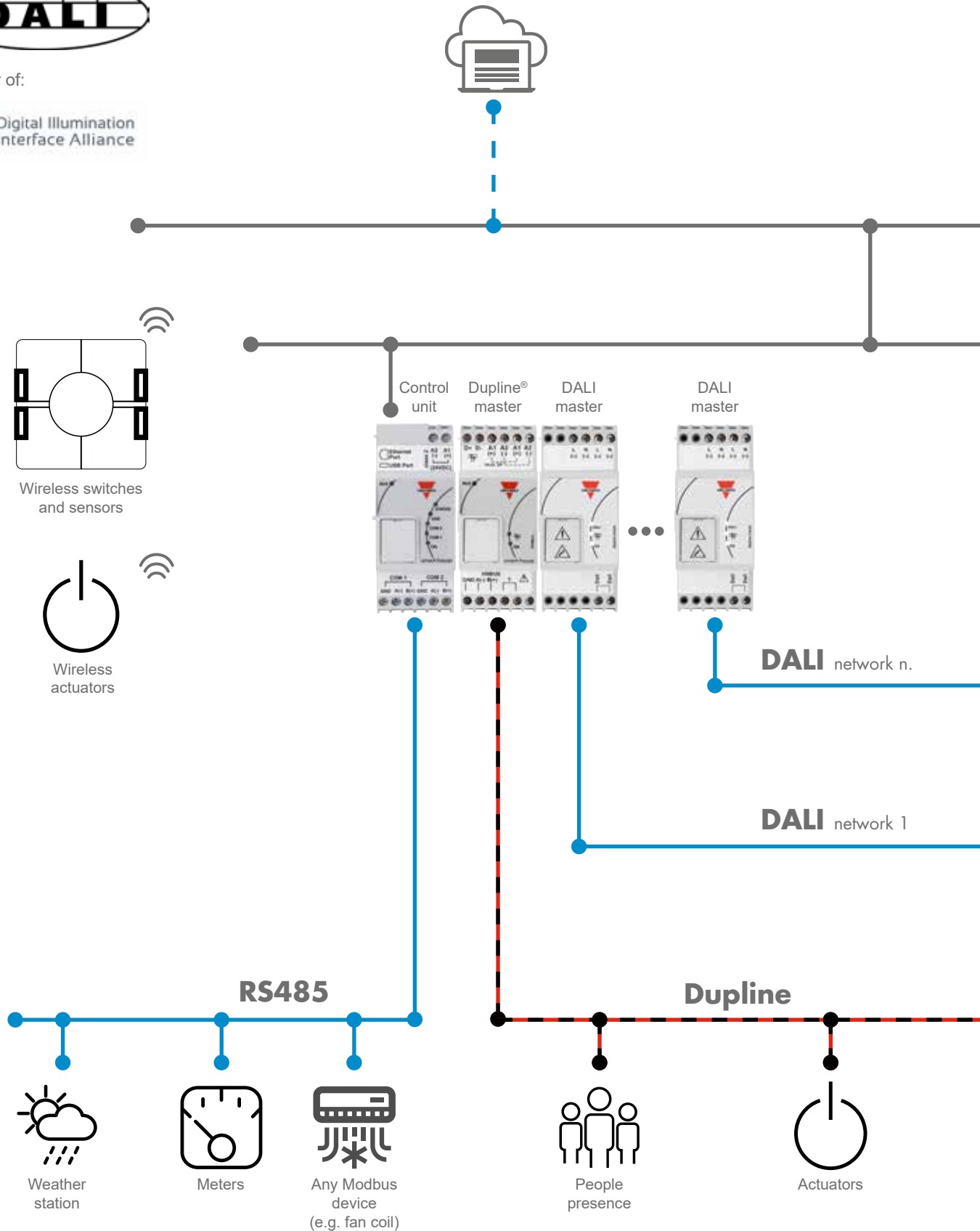


Building automation

Carlo Gavazzi's comprehensive system

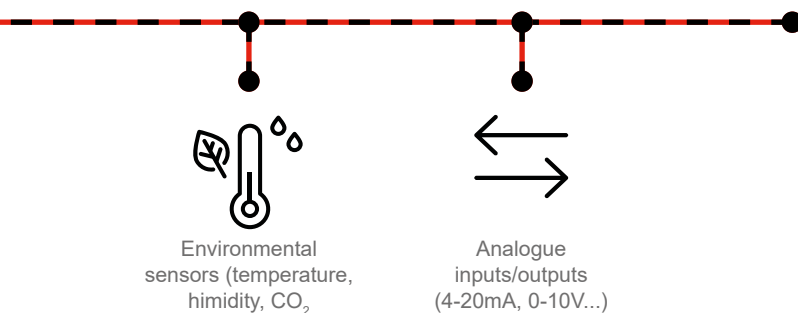
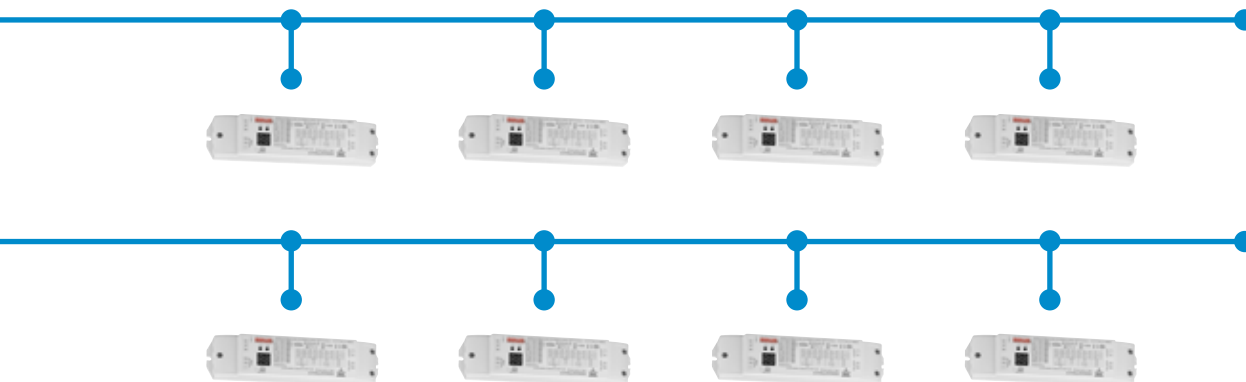


Member of:





Ethernet/BACnet/Modbus TCP/IP



Building automation

Brain and communication

SH2WEB24/SB2WEB24/SA2WEB24: the controller

Carlo Gavazzi's system is based on a central CPU, the Sx2WEB24, a Linux based embedded PC that manages all the smart functions. It is programmed by means of powerful software, the Sx tool. The Sx2WEB24 has the Ethernet communication capability to be remotely controlled and monitored by smart-devices/PCs; it is also a datalogger that can record any value/

event coming from the many buses it can connect to (Wireless and Dupline® buses, two RS485 ports, Ethernet). This master unit is also provided with an sd-card and USB port to upload/download data and system configurations



Fast commissioning



The innovative concept of the local bus makes commissioning very easy, fast and error free: the installer only has to plug the DIN modules next to one another without wiring any bus cable in the cabinet, saving time and drastically reducing installation costs. The wiring of the decentralised modules such as light switches, movement sensors, etc is also made very straightforward thanks to the screwless and detachable connectors: wires only need to be plugged in and everything is done!



The heart

The bus generators

If the Sx2WEB24 is the brain of the system, the two bus generators are the pulsating heart that makes all the information flow. They are connected to the Sx2WEB24 via the high speed bus that is present both on the local bus and on the terminals at the bottom. This means that the connection is very fast and easy in a cabinet, since the modules only have to be plugged together without any wiring, and at the same time it is very straightforward if the bus generators have to be mounted in different cabinets. Up to 7 bus generators can be connected to one Sx2WEB24.

SH2MCG24: the wired smart Dupline® bus generator

The SH2MCG24 is the smart Dupline® bus generator that enables the Dupline® bus to communicate with the local bus and with the terminals at the top. Thanks to this the DIN-rail slave modules (dimmers, relays, rollerblind modules, etc...) can just be plugged into the SH2MCG24, without the need for any wiring.

The decentralised modules, such as light switches, PIR sensors, temperature display, ...are connected to the SH2MCG24 by the two wires coming from the Dupline® terminals at the top. Up to 250 modules can be connected to one SH2MCG24.



SH2WBU230N: the wireless wiDup bus generator

The system also provides a solution for when it is not possible to use wires. The SH2WBU230N is the wireless bus generator that can control wireless light switches and output relay modules. The wireless bus is based on the standard IEEE 802.15.4 @2.4Ghz. Up to 250 modules can be managed by one

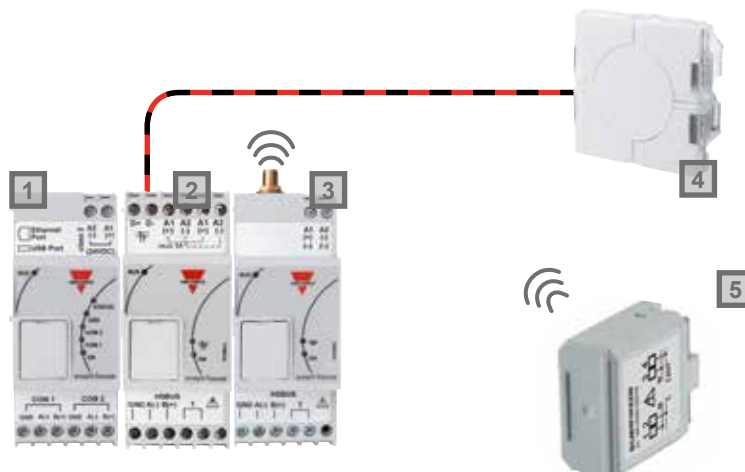
SH2WBU230N. The open space operating distance is 700m.



Wired and wireless buses work together

- 1 SH2WEB24
- 2 SH2MCG24
- 3 SH2WBU230N
- 4 SHA4XLS4TH
- 5 SHJWRE10AE230

— Dupline® bus.



Building automation

Functionalities

DALI lighting control

The DALI control system by Carlo Gavazzi not only provides cutting edge lighting control for commercial and residential lighting requirements but also within the same single system structure, a comprehensive shading and temperature control. The clear driving force today in lighting control

is to make the best use of the energy consumed by the building under design. A key area for potential energy savings, and therefore a focus for legislators, is lighting provision. It may be as simple as proper timed control, the use of sensors and dimming

technology for daylight harvesting or precise control for individual task lighting. Furthermore, alterations or additions in DALI systems are easy to achieve as the installation can be reused over and over, saving you money and downtime.



1 SHA4XLS4P90L
SHE5XLS4P90L
Light switch with integrated 90°
PIR sensor and luxmeter

2 SHJWD200WE230
Wireless dimmer with energy
reading

3 SH2RE16A4
4-relay module



4 Junction box

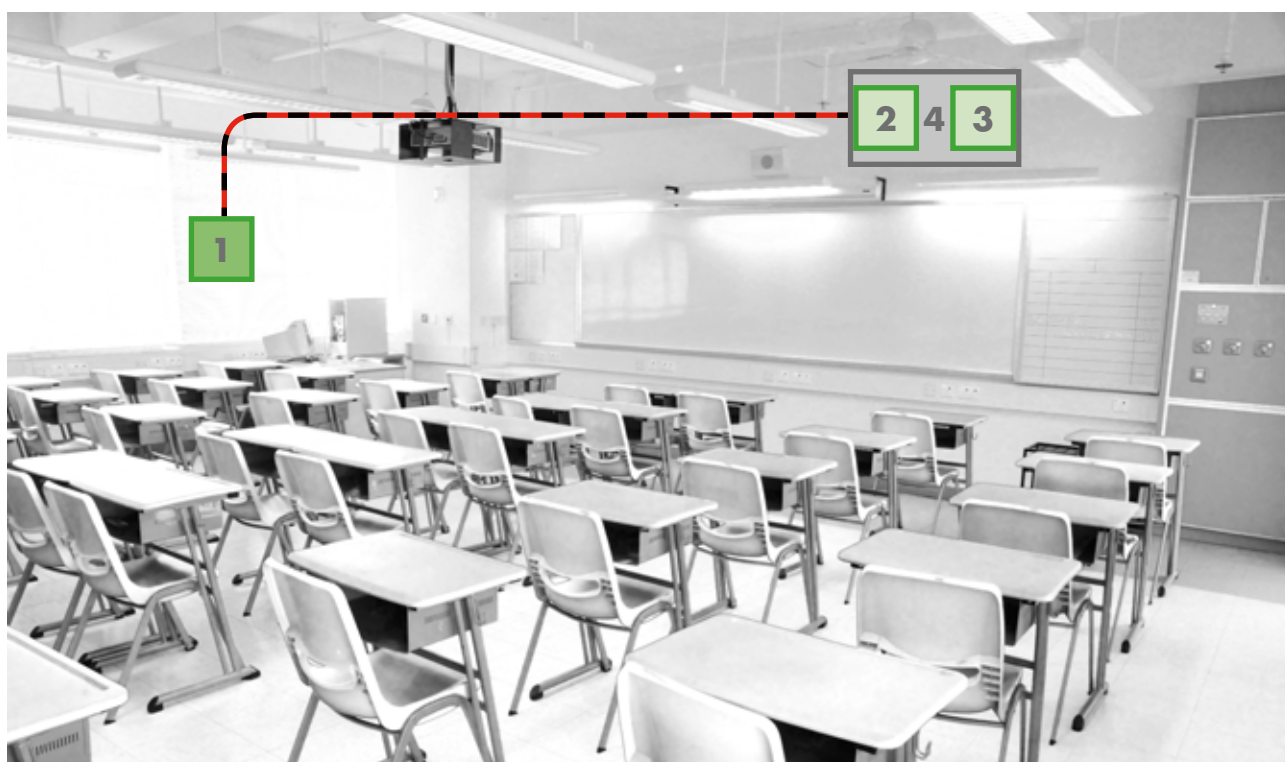
—: Dupline® BUS

Temperature and CO₂ control

The temperature control function has been developed to suit the needs of both small homes and big buildings thanks to the management of independent zones. The SB2WEB controller is empowered with the BACnet protocol so that it provides the link to upper level BMS and DDC client via BACnet/IP. All

the functions and I/Os are controlled and managed via BACnet for example adjusting operating parameters or reading environmental data. Air quality is another important aspect to consider in building automation: it is recommended that the content of CO₂ should be below 1,000 ppm

in an indoor environment. Some of the benefits with a low CO₂ level are better concentration, wellbeing, higher learning capability and improved patience recovery. Carlo Gavazzi delivers specific CO₂ sensors and ventilation control to assure occupant health.



1 SHSUCOTHD
Temperature, humidity and CO₂
sensor

2 SHPOUTV224
0-10V analogue output module

3 BDA-RE13A-U
Relay output module



4 Junction box

—: Dupline® BUS

Building automation

Functionalities

Tunable white stimulation

"Human centric lighting" is a new term what emphasizes light as a main factor influencing human behaviour in his life space. It simultaneously takes into account our requirements for good vision as well as our emotional and biological needs.

Typical use cases of tunable white lamps in various segments are:

Education - Decreased fatigue and shortened wake-up times, extended and deepened concentration periods.

Office - Increased employee motivation and commitment, individualized maximization of concentration and energy.

Wholesale and retail - Daylight-compatible product presentations,

extended daytime in shopping malls. Inviting a customer to buy goods and suggesting freshness and positive mood.

Hospital - Enhanced drug efficiency, e.g., of antidepressants, reduced therapy times and capacity requirements.

Carlo Gavazzi solution helps you tailor the colour and feel of a space to user needs and desires.



1

SB2DALIT8230
DALI master

2

SBQP360L24MF
Movement sensor with
integrated luxmeter

3

SHE5XWLS4BFT
Wireless light switch and
temperature sensor



4

Junction box

—: Dupline® BUS

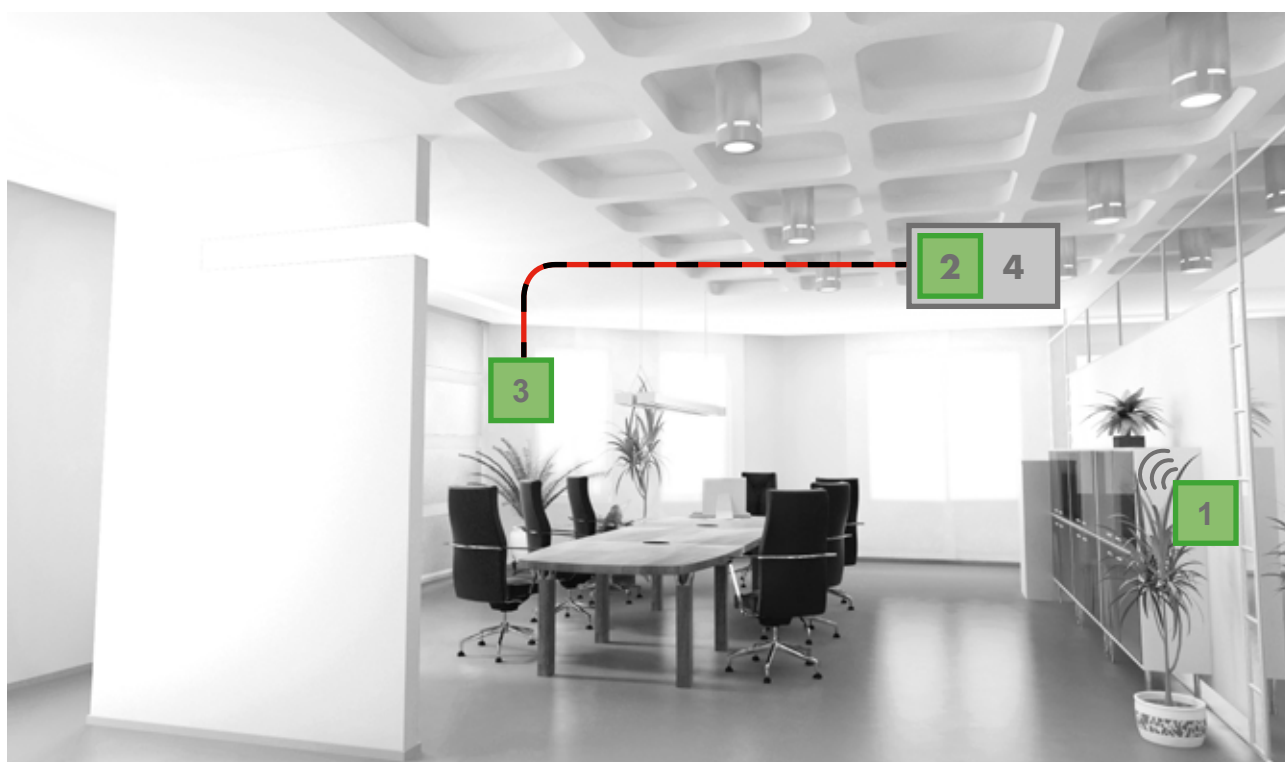
Shade control

Carlo Gavazzi functions for automated blinds can help control lighting, temperature and privacy, as well as enhancing comfort and security. The user can move these manually, using the same kind of switches as are used for light, or have them automatically moved according to predefined

light levels, rain and wind presence, temperatures and the scheduler. Carlo Gavazzi system for building automation also manages curtains with tilting flaps in a very efficient way. The blinds and windows can be controlled individually or by group: this choice can be defined once the

installation is finished and at any time later.

Energy saving is achieved also by means of a proper use of blinds and curtains.



1

SHE5XWLS4BFT
Wireless light switch and
temperature sensor



2

SH2RODC224
Roller blind module



3

SHSPP90L
PIR sensor with integrated
luxmeter



4

Junction box

—: Dupline® BUS

Building automation

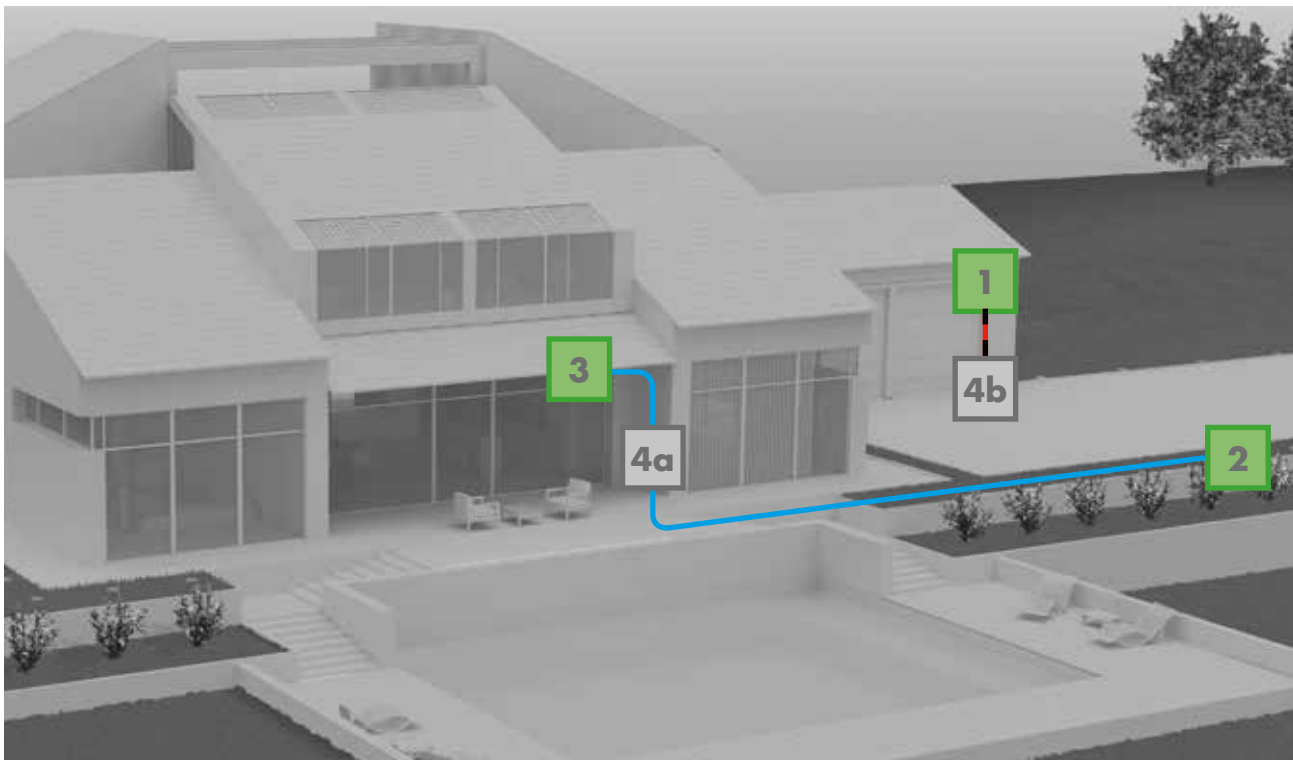
Functionalities

Sequences: one click to do many things

Sequences is a powerful tool offered by the system: the user can put together the functions already created to activate/deactivate them with just one click. For example, when the home owner activates the "Good bye" sequence when exiting his house, the intruder alarm is activated, all the lights are switched off, all the blinds go down

and the temperatures are set to the economy level. In the same way, when he comes back home, by activating the "Welcome" sequence all the required lights are switched on, the blinds go up, soft music or the television can be turned on, and so on ... there are no limits to the possibilities offered by the smart-house system.

Waking up in the morning can be programmed to be very gentle in a smart-house: the blinds go up to a predefined level very slowly so that the light intensity is not too strong, soft music starts and the temperature is programmed to reach the comfort level required.



1 SHWEAGPS
Weather station

2 SH2RE16A4
4-relay module

3 SH2D10V424
Dimmer module



4 a: Cabinet
b: Junction box

—: Dupline® BUS

—: Load control

Energy monitoring and data logging

The system reads and logs the electrical values and displays them in graphics, comparing them with the previous day, or presents them in downloadable excel and csv files.

The reading can be done using:

- Any Modbus device (e.g. meters, analysers, fan coils, heat pumps,...).
- The Dupline® output modules with energy reading capability (dimmer module, DIN-rail relay module and wireless relay output module): the information is sent via the Dupline® bus.

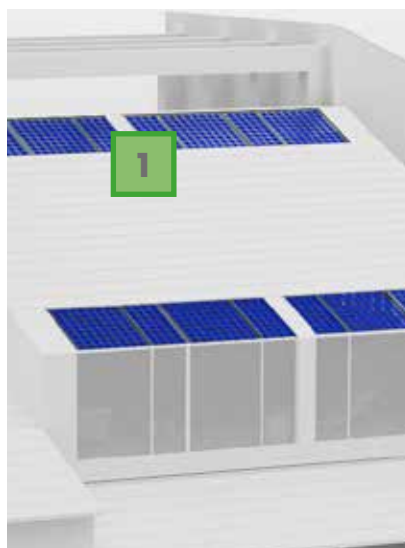
- The Dupline® DIN-rail pulse counter connected to an energy meter: the information is sent via the Dupline® bus.

At the same time, the installer can create simple logic to switch the loads off automatically if the consumed power exceeds the pre-set threshold, or they can be activated only according to a defined time table at cheaper electricity tariffs.

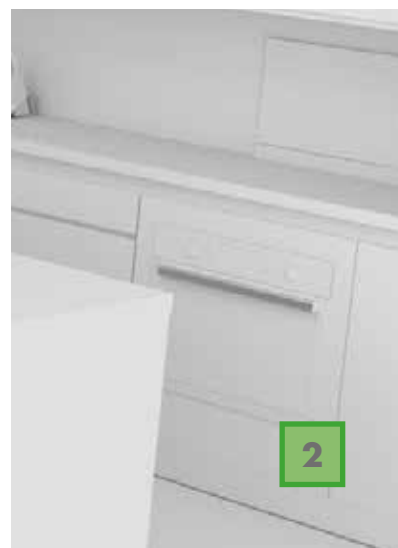
In the same user friendly format, the user can also view the consumption of gas and water.

As with all the electrical values, the system can log any analogue value and present it in graphs.

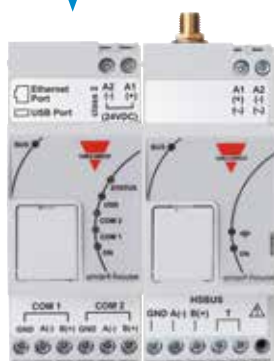
The graphs and instant values can be seen by using smart-devices such as mobile phones, tablets, PCs.



1 EM111
Energy meter



2 SHJWRE10AE230
Wireless relay with energy reading



SH2WEB24
SH2WBU230N



— : RS485

— : Dupline® BUS or
wireless wiDup

Building automation

Software

Diagnostic function

The Carlo Gavazzi's system provides information about its working status and makes it available by using the Sx tool and the webserver.

During commissioning, the installer is always aware of the working status of the connected buses bus, since the bus voltage, bus load and short-circuit are monitored, as well as the quality of the signal: thanks to this, if any fault should occur, the installer will be informed without going all around the

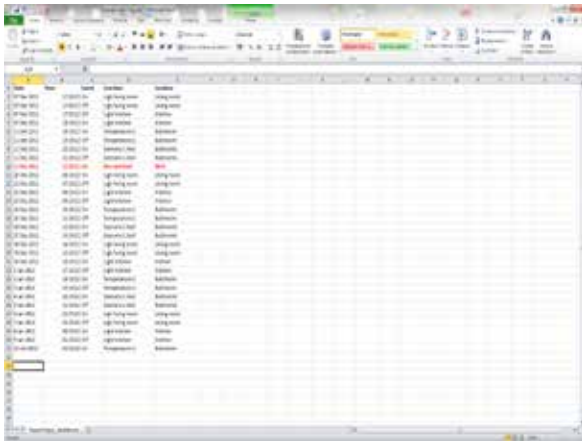
installation to look for it, thus saving time and money.

At the same time, each module is monitored to check if it is alive, working well and without any alarm/warning message such as over current, over voltage or over temperature, and the result is always available via smart-devices, so that the home owner can also be alerted in advance if any fault is going to occur.

The system also advises if a lamp or,

in general a load, is broken or not working anymore, reminding the user to change or repair it.

All the diagnostic events are logged in a file that can be accessed locally or remotely, providing the installer with a way to look into the problem even if it occurred in the past.



SmartHub: the touch display

In the living room or at the entrance, the SmartHub display is the ideal solution to control a smart-house with a finger touch. It is connected to the Sx2WEB24 master unit via Ethernet and it is configured by the easy-to-use Wizard software, which automatically reads the Modbus TCP/IP variables of the master unit and assists the installer in creating the user interface with a comprehensive object library and templates. All the functions such as

lights, scenario, light and shade, alarms, temperatures, ... can be controlled by the SmartHub. It can also be linked to external monitoring systems, such as surveillance IP cameras, to monitor parts of a building directly from the touch panel. Furthermore, audio/video systems with Modbus TCP/IP capability can be connected to control music and entertainment.



Sx tool: the configuration software

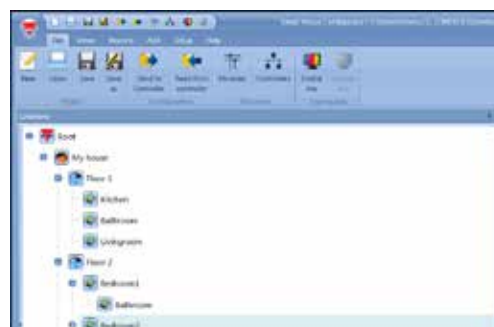
The master unit is programmed by means of the configuration software Sx tool, downloadable free from the Carlo Gavazzi website. The Sx software has been developed to make commissioning fast, easy and error free: the wizard tool guides the user step by step in the creation of predefined functions. As soon as the software is

connected to a master unit, it scans the network and finds all the connected modules. Thanks to this feature, the installer doesn't have to worry about any addressing of the modules, since it is done automatically, saving a lot of time and drastically reducing the numbers of errors. In a very intuitive way, the user can create a map of

the installation where he will place the required modules and create all the automation, either with predefined functions or by using special logic with the basic functions.

Create a "tree" map of the installation.

1



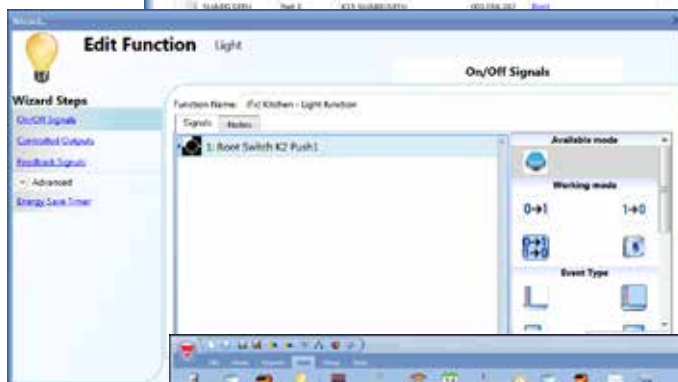
Add all the installed modules with an automatic network scan.

2



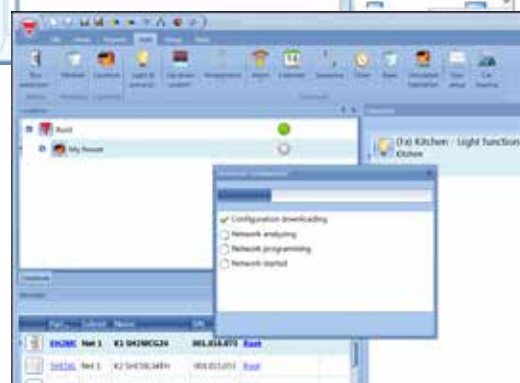
Create your functions in a very simple way by means of the wizard tool.

3



Download the configuration locally and remotely into the master unit Sx2WEB24.





4



Building automation

Our product range



Switches

		Colour/ Dimensions (mm)	Mounting	LED	Power supply	Other functions
	B4X-LS4-U	Black, white/ 44x44	Wall box Bticino, Niko, Fuga	White and blue	By bus	
	B5X-LS4-U	Black, white/ 55x55	Wall box Elko, Gira, Jung	White and blue	By bus	
	SHA4XLS4TH	Black, white/ 44x44	Wall box Bticino, Niko, Fuga	White and blue	By bus	With temperature and humidity sensor
	SHE5XLS4TH	Black, white/ 55x55	Wall box Elko, Gira, Jung	White and blue	By bus	With temperature and humidity sensor


Switches with integrated motion detector and luxmeter

		Colour/ Dimensions (mm)	Mounting	LED	Power supply	Main features
	SHA4XLS4P90L	Black, white/ 44x44	Wall box Bticino, Niko, Fuga	White and blue	By bus	4 push buttons, 90° PIR and luxmeter
	SHE5XLS4P90L	Black, white/ 55x55	Wall box Elko, Gira, Jung	White and blue	By bus	4 push buttons, 90° PIR and luxmeter



Temperature displays

		Colour/ Dimensions (mm)	Mounting	LED	Power supply	Main features
	SHA4XTEMDIS	Black, white/ 44x44	Wall box Bticino, Niko, Fuga	White and blue	By bus	Measuring range: -10°C to +50°C, 3 setpoints
	SHE5XTEMDIS	Black, white/ 55x55	Wall box Elko, Gira, Jung	White and blue	By bus	Measuring range: -10°C to +50°C, 3 setpoints










Outdoor temperature sensor

		Colour/ Dimensions (mm)	Mounting	Connection	Power supply	Measuring range
	BSI-TEMANx-U	White/ 67x35x15	Wall mounting	Cable or plug	By bus	-40°C to +50°C

Movement/Presence detectors

		Colour/ Dimensions (mm)	Mounting	LED	Power supply	Other functions
	B4X-PIR90-U	Black, white/ 44x44	Wall box Bticino, Niko, Fuga	White and blue	By bus	Operating distance: 8m Angle: 90°
	B5X-PIR90-U	Black, white/ 55x55	Wall box Elko, Gira, Jung	White and blue	By bus	Operating distance: 8m Angle: 90°
	BSD-PIR90-U	White/ 104x55x57	Wall mounting	Red	By bus	Operating distance: 10m Angle: 90°
	BSB-PIR90-U	White/ Ø 76x25	Ceiling mounting	Blue	By bus	Operating distance: 6m Angle: 90°
	BSP-PIR90-U	White/ 67x52x34	Wall mounting	Blue	By bus	Operating distance: 15m Angle: 90°
	SHA4XP150	Black, white/ 44x44	Wall box Bticino, Niko, Fuga	White and blue	By bus	Operating distance: 8m Angle: 150°
	SHE5XP150	Black, white/ 55x55	Wall box Elko, Gira, Jung	White and blue	By bus	Operating distance: 8m Angle: 150°


Movement/Presence detectors with luxmeter

		Colour/ Dimensions (mm)	Mounting	LED	Power supply	Other functions
	SHA4XP90L	Black, white/ 44x44	Wall box Bticino, Niko, Fuga	White and blue	By bus	Operating distance: 8m Angle: 90°
	SHE5XP90L	Black, white/ 55x55	Wall box Elko, Gira, Jung	White and blue	By bus	Operating distance: 8m Angle: 90°
	SHSDP90L	White/ 104x55x57	Wall mounting	Red	By bus	Operating distance: 10m Angle: 90°
	SHSBP90L	White/ Ø 76x25	Ceiling mounting	Blue	By bus	Operating distance: 6m Angle: 90°
	SHSPP90L	White/ 67x52x34	Wall mounting	Blue	By bus	Operating distance: 15m Angle: 90°
	SBQP360L24M...	White/ Ø 96.5x70.6 Ø 95.0x81.5	Flush or built-in mounting	White and blue	By bus	Operating distance: 24m Angle: 360°
	SHQP360L7M...	White/ Ø 96.5x70.6 Ø 95.0x81.5	Flush or built-in mounting	White and blue	By bus	Operating distance: 7m Angle: 360°
	SHA4XP150L	Black, white/ 44x44	Wall box Bticino, Niko, Fuga	White and blue	By bus	Operating distance: 8m Angle: 150°
	SHE5XP150L	Black, white/ 55x55	Wall box Elko, Gira, Jung	White and blue	By bus	Operating distance: 8m Angle: 150°





Building automation

Our product range


Luxmeter for indoor and outdoor installation

		Colour/ Dimensions (mm)	Mounting	Connection	Power supply	Measuring range
	BSH-LUX-U	White/ 55x53x36	Wall mounting	Cable	By bus	Measuring range: 0 to 20Klux Operating temperature: -30° to 60°C


Light switch interfaces

		Dimension (mm)	Inputs number and type	Outputs number and type	Output voltage	Power supply
	BDB-INCON4-U	28x28x10	4, voltage free			By bus
	BDB-INCON8-U	28x28x10	8, voltage free			By bus
	BDB-IOCP8-U	28x28x10	4, voltage free	4, PNP	3.3 V	By bus
	BDB-IOCP8A-U	28x28x10	4, voltage free	4, PNP	8.0 V	By bus


Digital input modules

		Dimension (mm)	Inputs number	Input type	Power supply
	BDD-INCON4-U	107x50x110	4	Voltage free or NPN	By bus


Voltage input modules

		Dimension (mm)	Inputs number	Input type	Power supply
	BDA-INVOL-U	28x28x10	1	Opto-isolated voltage input 90-265 VAC	By bus


Anemometer

		Dimension (mm)	Type	Mounting	Power supply	Main features
	BSN-ANE-U	183x137x145	Cup anemometer	Wall mounting	By bus	Measuring range: 2 m/s to 25m/s Heating system


Weather station

		Dimension (mm)	Measurements	Power supply	Main features
	SHOWEAGPS	96x77x118	Light, wind, temperature, GPS receiver	10 to 40 Vdc, 12 to 28 Vac	Operating temperature: -30° C to 50°C Communication: Modbus RTU


Water detector

		Dimension (mm)	Colour	Mounting	Power supply	Main features
	BSF-WAT-U	70x39x15.5	White	Wall mounting	By bus	Input for Felson probe, IP67











Smoke detector

		Dimension (mm)	Colour	Mounting	LED	Power supply	Main features
	BSG-SMO-U	Ø 100x54	White	Ceiling mounting	1, Red	By bus	Detection area: 60 m² Battery back-up (9Vdc battery)
	BSG-SMOA-U	Ø 100x54	White	Ceiling mounting	1, Red	By bus	Detection area: 60 m²

Programmable keypad

		Dimension (mm)	Mounting	LED	Power supply	Main features
	BACC-KEYPAD-DC-U	130x50x8	Wall box indoor and outdoor	3, programmable	12 Vdc	28 user-programmable codes Buzzer output






Environmental sensors

		Mounting	Power supply	Main features	Indication
	SHSUCOT	Wall mounting, 80x90x26 mm	By bus	CO ₂ and temperature sensor	
	SHSUCOTD	Wall mounting, 80x90x26 mm	By bus	CO ₂ and temperature sensor	Display
	SHSUCOTL	Wall mounting, 80x90x26 mm	By bus	CO ₂ and temperature sensor	RGB LEDs
	SHSUCOTH	Wall mounting, 80x90x26 mm	By bus	CO ₂ , temperature and humidity sensor	
	SHSUCOTHHD	Wall mounting, 80x90x26 mm	By bus	CO ₂ , temperature and humidity sensor	Display
	SHSUCOTHL	Wall mounting, 80x90x26 mm	By bus	CO ₂ , temperature and humidity sensor	RGB LEDs
	SHSUT	Wall mounting, 80x90x26 mm	By bus	Temperature sensor	
	SHSUTD	Wall mounting, 80x90x26 mm	By bus	Temperature sensor	Display
	SHSUTH	Wall mounting, 80x90x26 mm	By bus	Temperature and humidity sensor	
	SHSUTHHD	Wall mounting, 80x90x26 mm	By bus	Temperature and humidity sensor	Display


Building automation

Our product range


Analogue input modules

		Dimension (mm)	Inputs number and type	Power supply
	SHPINV324	50x30x18	3, 0 to 10 V	24 Vdc
	SHPINV2T1P124	50x30x18	2, 0 to 10V; 1, thermistor 10K3; 1, potentiometer 1-11Ω	24 Vdc
	SHPINT1P1	50x30x18	1, thermistor 10K3; 1, potentiometer 1-11Ω	By bus
	SHPINNI2	50x30x18	2, configurable pt1000/ni1000	By bus
	SHPINA224	50x30x18	2, 0-20mA/ 4-20mA	24 Vdc


Analogue output modules

		Dimension (mm)	Outputs number and type	Power supply
	SHPOUTV224	50x30x18	2, 0 to 10 Vdc	24 Vdc




Dupline® transparent module

	Mounting	Main features
 SH1DUPFT	DIN rail (1 module)	Transparent Dupline® module






Energy meter

	Mounting	Inputs number	Input type	Power supply	Main features
 SH2EM16A230	DIN rail (2 modules)	1	Monophase	230 Vac	Load: 16 A, 230 Vac




Dimmer modules

	Mounting	Outputs number	Dimming type	Power supply	Main features
 SH2D500WE230	DIN rail (2 modules)	1	230 V dimmable bulbs, LEDs	230 Vac	Power dimmer up to 500W, energy reading, local bus
 SH2D500W1230	DIN rail (2 modules)	1	230 V dimmable bulbs, LEDs	230 Vac	Power dimmer up to 500W, local bus
 SH2D10V424	DIN rail (2 modules)	4	1 to 10V dimmable ballast, LEDs	24 Vdc ±20%	Four independent outputs, local bus




Output modules

		Mounting	Outputs number	Output type	Power supply	Main features
	BDA-RE13A-U	Decentral	1	Bistable relay	By bus	Load: 16 A, 230 Vac
	SH2RE16A2E230	DIN rail (2 modules)	2	Bistable relay	230 Vac	Load: 16 A, 230 Vac x 2, with energy reading, local bus
	SH2RE16A4	DIN rail (2 modules)	4	Bistable relay	By bus	Load: 16 A, 230 Vac x 4, local bus
	SH2RE1A424	DIN rail (2 modules)	4	NO, voltage free contact	24 Vdc \pm 20%	Load: 5 A, NO x 4, local bus
	SH2SSTRI424	DIN rail (2 modules)	4	Solid state relay	24 Vdc \pm 20%	Load: 10 W x 4, local bus



Rollerblind modules

		Mounting	Outputs number	Motor type	Power supply	Main features
	SHDRODC230	Decentral	1	AC	230 Vac	Up/down control, tilting, local bus
	SH2ROAC224	DIN rail (2 modules)	2	AC	24 Vdc \pm 20%	Up/down control, tilting, local bus
	SH2RODC224	DIN rail (2 modules)	2	DC	24 Vdc \pm 20%	Up/down control, tilting, local bus

Digital input module/Pulse counter

		Mounting	Inputs number	Type	Power supply	Main features
	SH2INDI424	DIN rail (2 modules)	4	NPN, PNP, voltage free, pulse counter	24 Vdc \pm 20%	Configurable inputs, local bus
	SHPINCNTS04	Decentral	4	NPN, PNP, voltage free, pulse counter	By bus	Configurable inputs, S0 class B inputs
	SHPINCNT4	Decentral	4	NPN, PNP, voltage free, pulse counter	By bus	Configurable inputs

DALI

		Mounting / Dimensions	Power supply	Main features
	SB2DALIT8230	DIN rail (2 modules)	230 Vac	DALI master and power supply to control up to 64 ballasts
	SBBADT8CCT	210 x 50 x 32 mm	230 Vac	DALI driver for type 6 and type 8 LED


Building automation

Our product range




Wireless modules, transmission based on IEEE 802.15.4, at 2.4 GHz

		Module type	Power supply	Main features
	SHA4XWLS4	Black/White light switch	Battery	44x44; 4 push buttons; LED indication; wall box Bticino, Niko and Fuga
	SHE5XWLS4	Black/White light switch	Battery	55x55; 4 push buttons; LED indication; wall box Elko, Gira and Jung
	SHE5XWLS4BF	Black flat light switch	Battery	55x55; 4 push buttons; LED indication; wall box Elko and Gira
	SHE5XWLS4BFT	Black flat light switch and temperature sensor	Battery	55x55; 4 push buttons; LED indication; wall box Elko and Gira
	SHE5XWLS4WF	White flat light switch	Battery	55x55; 4 push buttons; LED indication; wall box Elko and Gira
	SHE5XWLS4WFT	White flat light switch and temperature sensor	Battery	55x55; 4 push buttons; LED indication; wall box Elko and Gira
	SHJWD200WEWLS230	White dimmer, light switch and energy meter	230 Vac	Dimmer with integrated energy meter and 2 white pushbuttons, for Bticino frame
	SHJWD200WEBSL230	Black dimmer, light switch and energy meter	230 Vac	Dimmer with integrated energy meter and 2 black pushbuttons, for Bticino frame
	SHJWD200WE115	Dimmer and energy meter	115 Vac	Dimmer with integrated energy meter to be mounted into eurobox
	SHJWD200WE230	Dimmer and energy meter	230 Vac	Dimmer with integrated energy meter to be mounted into eurobox
	SHJWEM16A115	Energy meter	115 Vac	Energy meter to be mounted into eurobox
	SHJWEM16A230	Energy meter	230 Vac	Energy meter to be mounted into eurobox
	SHJWRE10AEWLS230	White relay, light switch and energy meter	230 Vac	Relay with integrated energy meter and 2 white pushbuttons, for Bticino frame
	SHJWRE10AEBSL230	Black relay, light switch and energy meter	230 Vac	Relay with integrated energy meter and 2 black pushbuttons, for Bticino frame
	SHJWRE10AE115	Relay and energy meter	115 Vac	Relay with integrated energy meter to be mounted into eurobox
	SHJWRE10AE230	Relay and energy meter	230 Vac	Relay with integrated energy meter to be mounted into eurobox
	SHJWINS04xxx	Input and pulse counter	230/115 Vac	Four programmable input: normally open, normally closed, pulse counter according to S0 class B
	SHDWWISENxxx	Window sensor	Battery	Door/window opening detected through sensor's body and a magnet separation with addition voltage free input




Smart dupline® repeater

	Mounting	Power supply	Main features
 SB2REP230	DIN rail (2 modules)	230 Vac	Smart Dupline® signal repeater that regenerates Dupline® signal and boosts power to extend the network length




Bus generators

	Mounting	Power supply	Main features
 SH2MCG24	DIN rail (2 modules)	24 Vdc $\pm 20\%$	Smart Dupline® bus generator, up to 250 slave modules can be connected
 SH2WBU230N	DIN rail (2 modules)	24 Vdc $\pm 20\%$ 115-240 Vac 50/60 Hz $\pm 10\%$	Wireless bus generator, up to 250 slave modules can be connected, based on IEEE 802.15.4, @ 2.4 GHz
 SH2DUG24	DIN rail (2 modules)	24 Vdc $\pm 20\%$	Dupline generator for BH8-CTRLx compatibility



Controllers (CPU)

	Mounting	Power supply	Main features
 SH2WEB24	DIN rail (2 modules)	24 Vdc $\pm 20\%$	Home automation controller with datalogging capability. Linux based PC with 2 USB ports, Ethernet port, 2 RS485 ports, local bus
 SB2WEB24	DIN rail (2 modules)	24 Vdc $\pm 20\%$	Building automation controller with datalogging capability and Bacnet. Linux based PC with 2 USB ports, Ethernet port, 2 RS485 ports, local bus
 SA2WEB24	DIN rail (2 modules)	24 Vdc $\pm 20\%$	Room controller for hotel rooms and flats in condominium blocks

USB adaptor for dongle modem

	Mounting	Power supply	Main features
 SH2DSP24	DIN rail (2 modules)	24 Vdc $\pm 20\%$	For USB dongle modem D-Link DWM 156 and 157, Huawei MS2131
 HUAWEIMS2131	USB port	By SH2DSP24	USB 3G DONGLE MODEM
 SH-MODEMKIT	-	-	Kit including SH2DSP24 and HUAWEIMS2131

Touch display

	Dimension (mm)	Power supply	Main features
 BTM-T7-24	187x147x47	24 Vdc $\pm 20\%$	Windows CE, 7", 800 x 480 pixel, Ethernet port
 BTM-T4-24	147x107x56	24 Vdc $\pm 20\%$	Windows CE, 4.3", 480 x 272 pixel, Ethernet port

OUR SALES NETWORK IN EUROPE

AUSTRIA

Carlo Gavazzi GmbH
Ketzergasse 374,
A-1230 Wien
Tel: +43 1 888 4112
Fax: +43 1 889 10 53
office@carlogavazzi.at

BELGIUM

Carlo Gavazzi NV/SA
Mechelsesteenweg 311,
B-1800 Vilvoorde
Tel: +32 2 257 4120
Fax: +32 2 257 41 25
sales@carlogavazzi.be

DENMARK

Carlo Gavazzi Handel A/S
Over Hadstenvej 40,
DK-8370 Hadsten
Tel: +45 89 60 6100
Fax: +45 86 98 15 30
handel@gavazzi.dk

FINLAND

Carlo Gavazzi OY AB
Ahventie, 4 B,
FI-02170 Espoo
Tel: +358 9 756 2000
Fax: +358 9 756 20010
myynti@gavazzi.fi

FRANCE

Carlo Gavazzi Sarl
Zac de Paris Nord II, 69, rue de la Belle Etoile,
F-95956 Roissy CDG Cedex
Tel: +33 1 49 38 98 60
Fax: +33 1 48 63 27 43
french.team@carlogavazzi.fr

GERMANY

Carlo Gavazzi GmbH
Pfnorstr. 10-14
D-64293 Darmstadt
Tel: +49 6151 81000
Fax: +49 6151 81 00 40
info@gavazzi.de

GREAT BRITAIN

Carlo Gavazzi UK Ltd
4.4 Frimley Business Park,
Frimley, Camberley, Surrey GU16 7SG
Tel: +44 1 276 854 110
Fax: +44 1 276 682 140
sales@carlogavazzi.co.uk

ITALY

Carlo Gavazzi SpA
Via Milano 13,
I-20020 Lainate
Tel: +39 02 931 761
Fax: +39 02 931 763 01
info@gavazziacbu.it

NETHERLANDS

Carlo Gavazzi BV
Wijkmeeweg 23,
NL-1948 NT Beverwijk
Tel: +31 251 22 9345
Fax: +31 251 22 60 55
info@carlogavazzi.nl

NORWAY

Carlo Gavazzi AS
Melkeveien 13,
N-3919 Porsgrunn
Tel: +47 35 93 0800
Fax: +47 35 93 08 01
post@gavazzi.no

PORTUGAL

Carlo Gavazzi Lda
Rua dos Jerónimos 38-B,
P-1400-212 Lisboa
Tel: +351 21 361 7060
Fax: +351 21 362 13 73
carlogavazzi@carlogavazzi.pt

SPAIN

Carlo Gavazzi SA
Avda. Iparraguirre, 80-82,
E-48940 Leioa (Bizkaia)
Tel: +34 94 480 4037
Fax: +34 94 431 6081
gavazzi@gavazzi.es

SWEDEN

Carlo Gavazzi AB
V:a Kyrkogatan 1,
S-652 24 Karlstad
Tel: +46 54 85 1125
Fax: +46 54 85 11 77
info@carlogavazzi.se

SWITZERLAND

Carlo Gavazzi AG
Verkauf Schweiz/Vente Suisse
Sumpfstrasse 3,
CH-6312 Steinhausen
Tel: +41 41 747 4535
Fax: +41 41 740 45 40
info@carlogavazzi.ch

OUR SALES NETWORK IN THE AMERICAS

USA

Carlo Gavazzi Inc.
750 Hastings Lane,
Buffalo Grove, IL 60089, USA
Tel: +1 847 465 6100
Fax: +1 847 465 7373
sales@carlogavazzi.com

CANADA

Carlo Gavazzi Inc.
2660 Meadowvale Boulevard,
Mississauga, ON L5N 6M6, Canada
Tel: +1 905 542 0979
Fax: +1 905 542 22 48
gavazzi@carlogavazzi.com

MEXICO

Carlo Gavazzi Mexico S.A. de C.V.
Circuito Puericultores 22, Ciudad Satelite
Naucalpan de Juárez, EDOMEX CP 53100
Tel & Fax: +52.55.5373.7042
mexicosales@carlogavazzi.com

BRAZIL

Carlo Gavazzi Automação Ltda.Av.
Francisco Matarazzo, 1752
Conj 2108 - Barra Funda - São Paulo/SP
Tel: +55 11 3052 0832
Fax: +55 11 3057 1753
info@carlogavazzi.com.br

OUR SALES NETWORK IN ASIA AND PACIFIC

SINGAPORE

Carlo Gavazzi Automation Singapore Pte. Ltd.
61 Tai Seng Avenue #05-06
Print Media Hub @ Paya Lebar iPark
Singapore 534167
Tel: +65 67 466 990
Fax: +65 67 461 980
info@carlogavazzi.com.sg

MALAYSIA

Carlo Gavazzi Automation (M) SDN. BHD.
D12-06-G, Block D12,
Pusat Perdagangan Dana 1,
Jalan PJU 1A/46, 47301 Petaling Jaya,
Selangor, Malaysia.
Tel: +60 3 7842 7299
Fax: +60 3 7842 7399
sales@gavazzi-asia.com

CHINA

Carlo Gavazzi Automation
(China) Co. Ltd.
Unit 2308, 23/F.,
News Building, Block 1, 1002
Middle Shennan Zhong Road,
Shenzhen, China
Tel: +86 755 83699500
Fax: +86 755 83699300
sales@carlogavazzi.cn

HONG KONG

Carlo Gavazzi Automation
Hong Kong Ltd.
Unit 3 12/F Crown Industrial Bldg.,
106 How Ming St., Kwun Tong,
Kowloon, Hong Kong
Tel: +852 23041228
Fax: +852 23443689

OUR COMPETENCE CENTRES AND PRODUCTION SITES

DENMARK

Carlo Gavazzi Industri A/S
Hadsten

MALTA

Carlo Gavazzi Ltd
Zejtun

ITALY

Carlo Gavazzi Controls SpA
Belluno

LITHUANIA

Uab Carlo Gavazzi Industri Kaunas
Kaunas

CHINA

Carlo Gavazzi Automation (Kunshan) Co., Ltd.
Kunshan

HEADQUARTERS

Carlo Gavazzi Automation SpA
Via Milano, 13
I-20020 - Lainate (MI) - ITALY
Tel: +39 02 931 761
info@gavazziautomation.com

CARLO GAVAZZI
Automation Components

Energy to Components!

www.gavazziautomation.com

